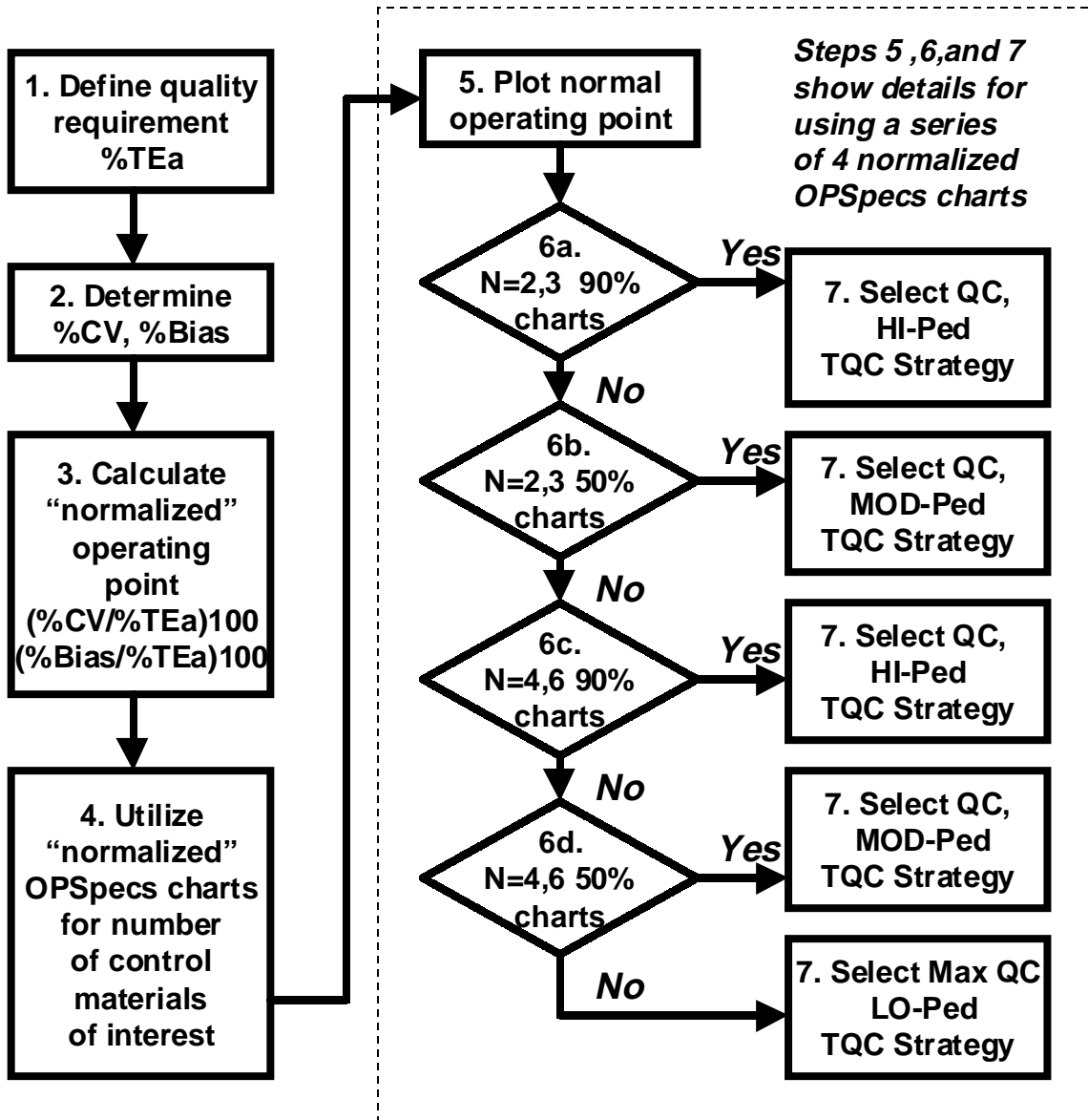


Normalized OPSpecs Quality-Planning Tool

Westgard QC,
Madison, WI 53717 USA
Copyright 2000

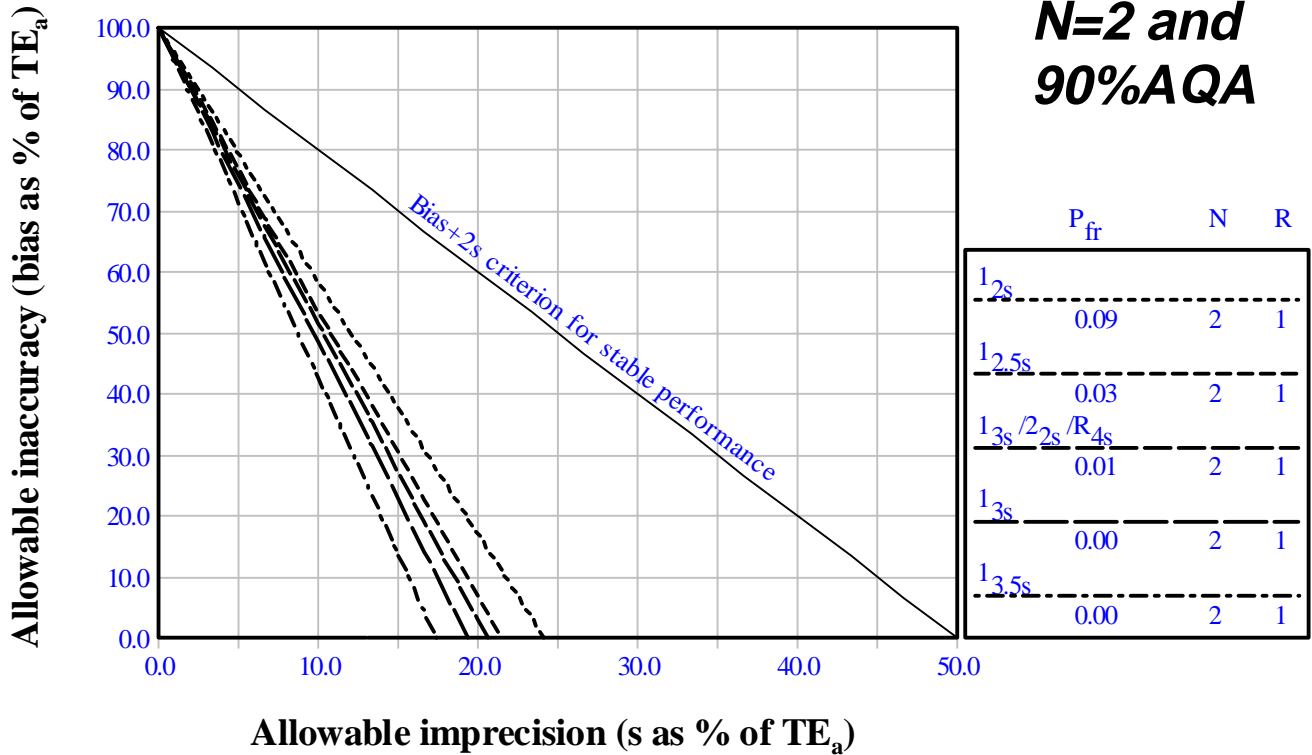
Step-by-step directions



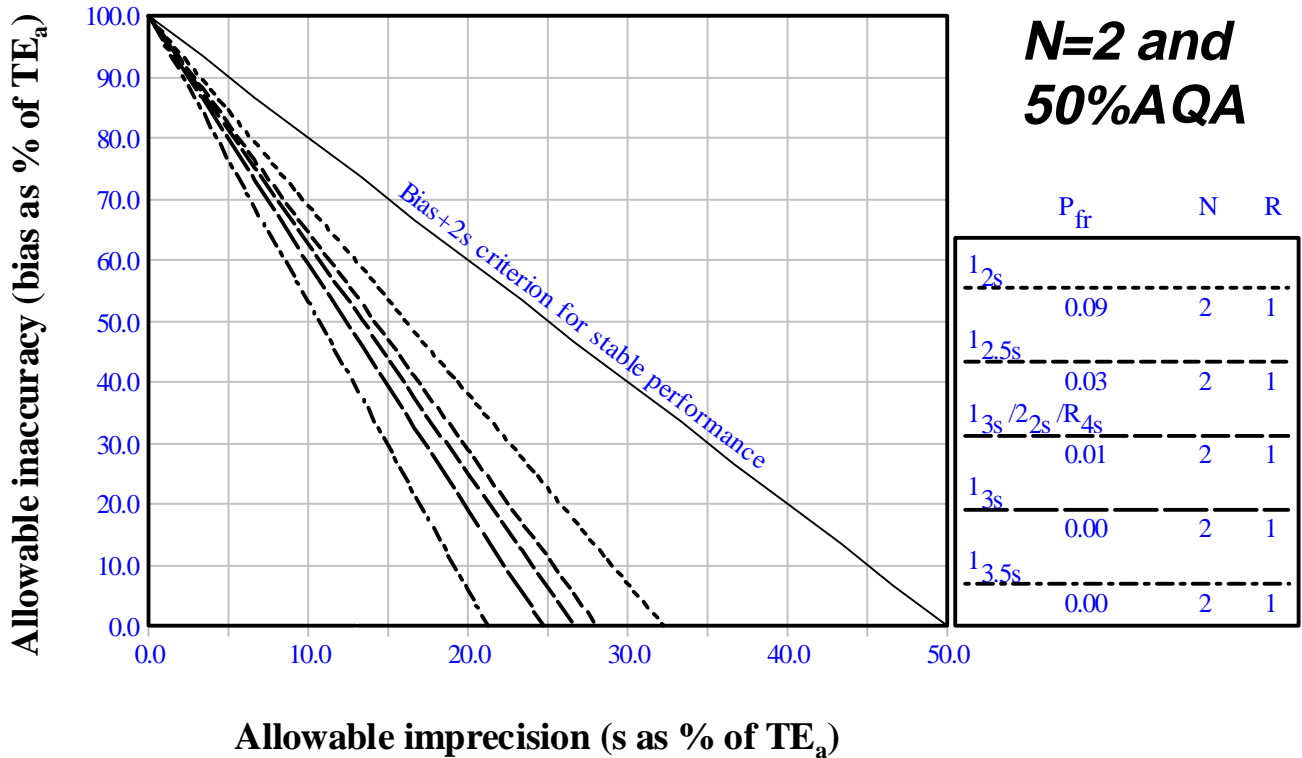
See Basic Quality Planning, lesson 8, <http://www.westgard.com> for more detailed directions and example applications of this quality-planning tool.

Start with top chart (use bottom only if max N=2)

Normalized OPSecs Chart TE_a 100.0% with 90% AQA(SE)

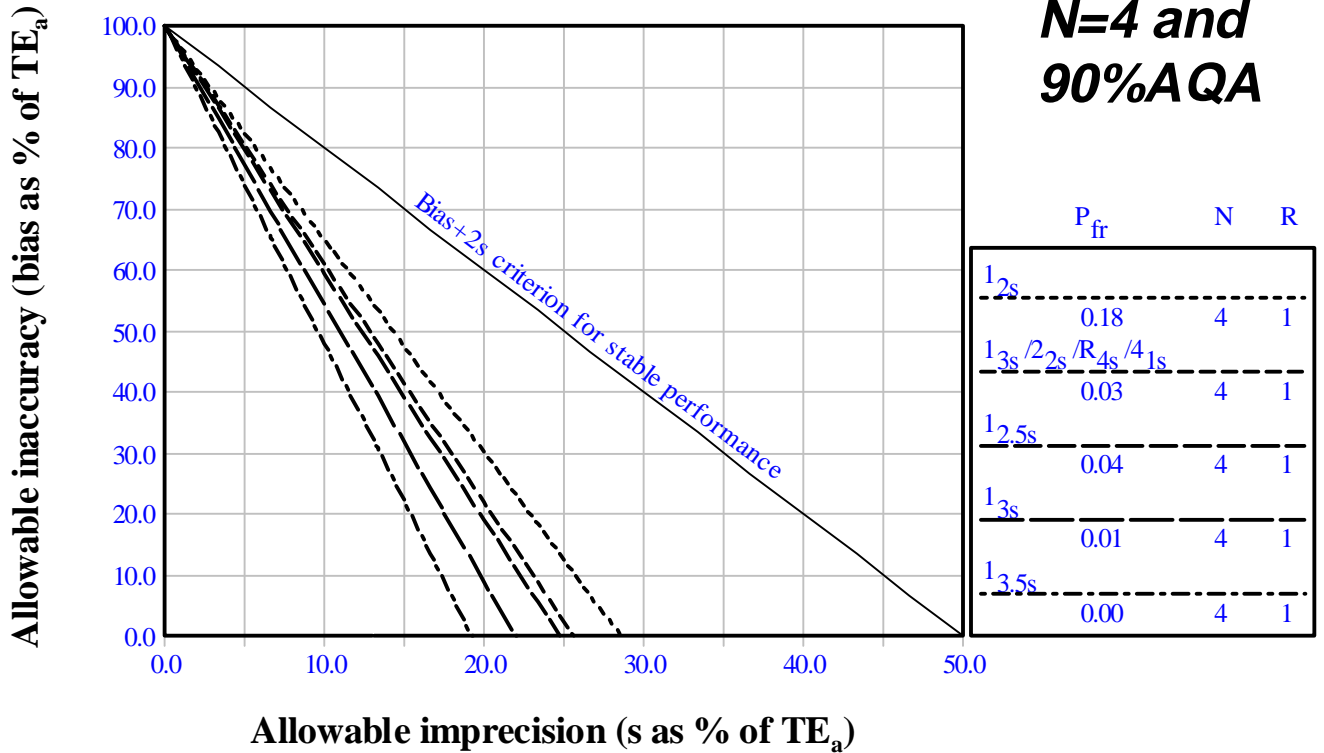


Normalized OPSecs Chart TE_a 100.0% with 50% AQA(SE)



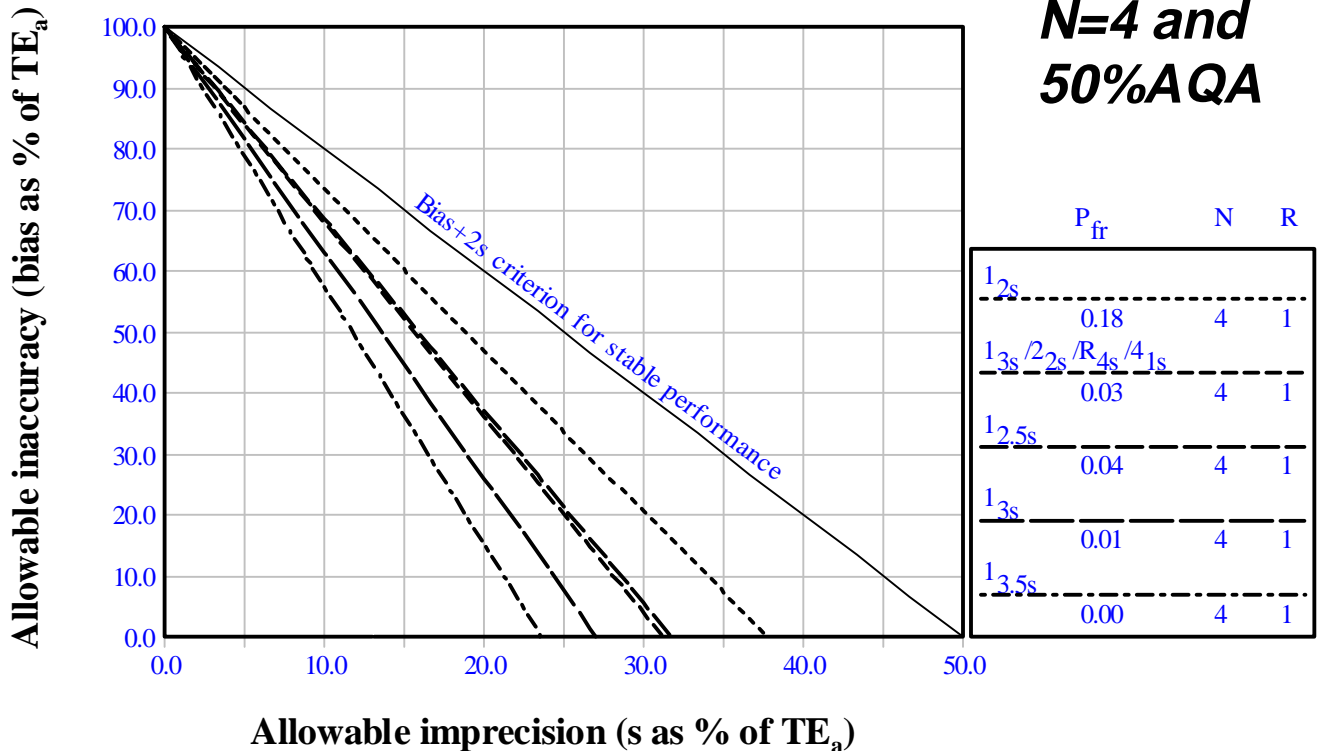
Next, try these charts - top then bottom

Normalized OPSpecs Chart TE_a 100.0% with 90% AQA(SE)



**N=4 and
90%AQA**

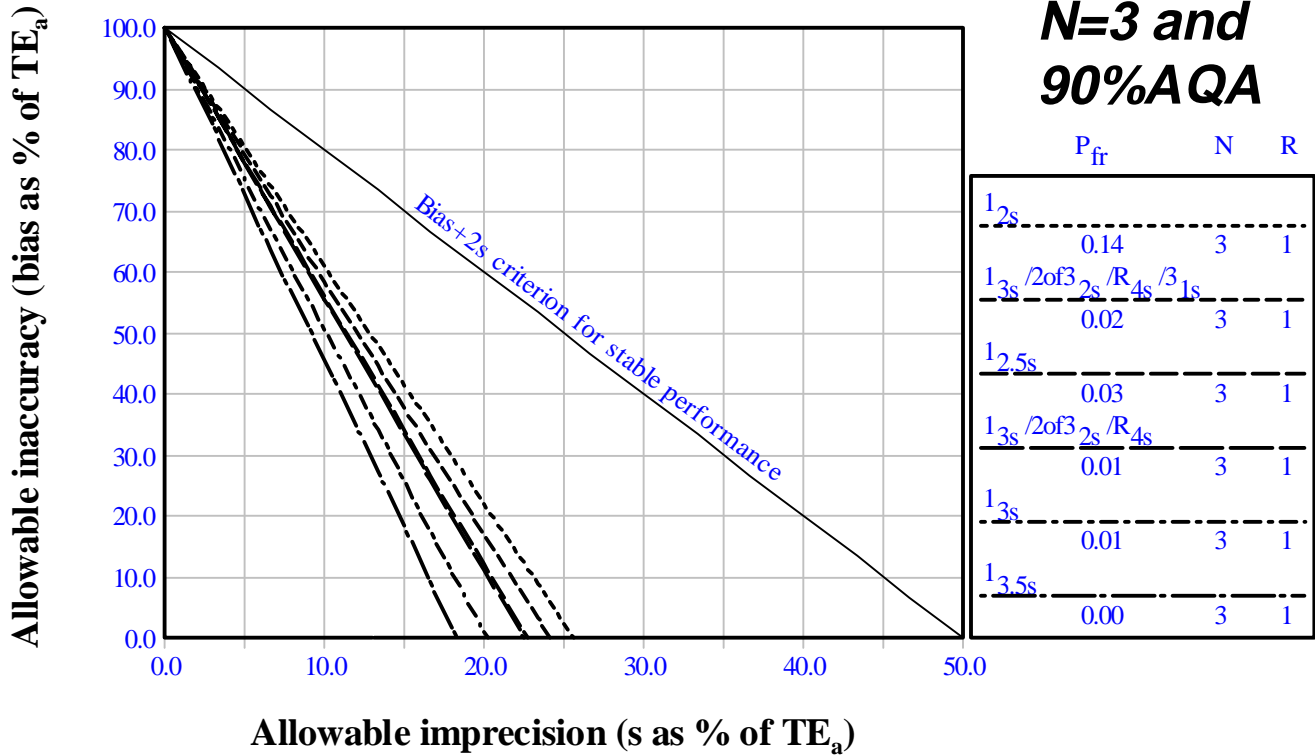
Normalized OPSpecs Chart TE_a 100.0% with 50% AQA(SE)



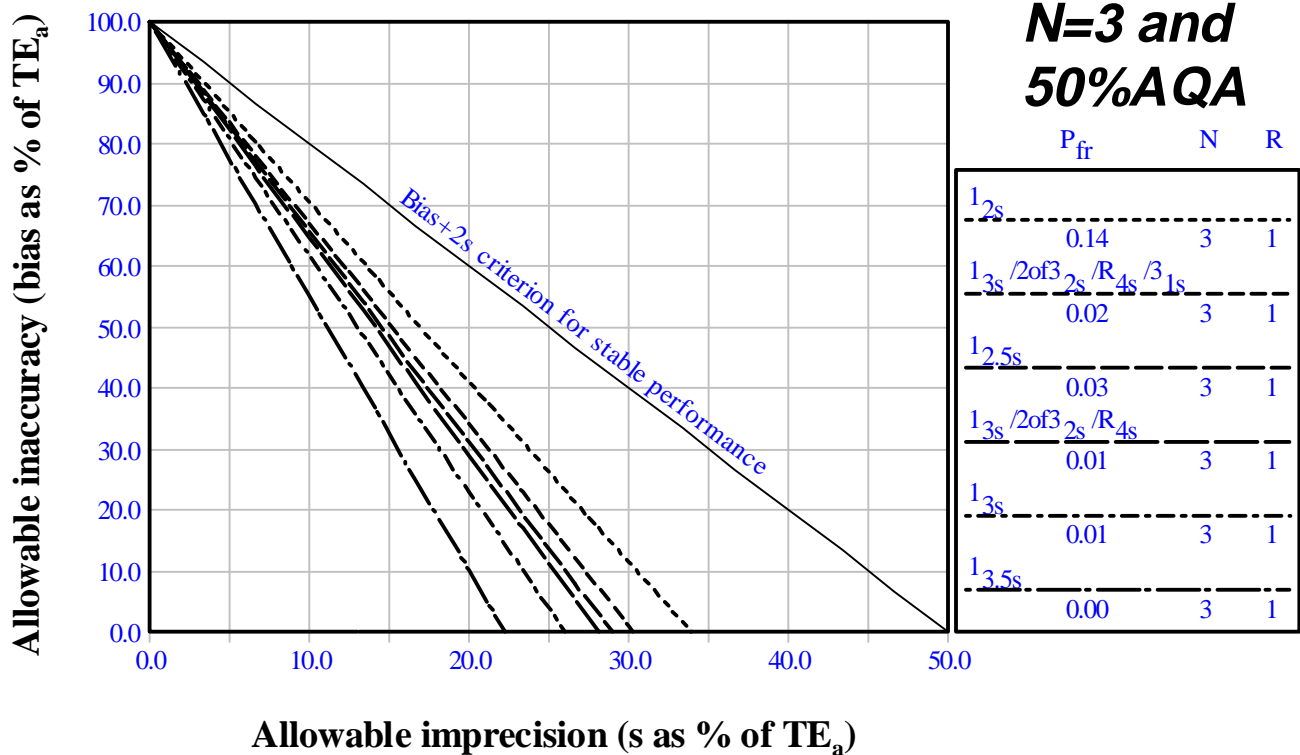
**N=4 and
50%AQA**

Start with top chart (use bottom only if max N=3)

Normalized OPSecs Chart TE_a 100.0% with 90% AQA(SE)

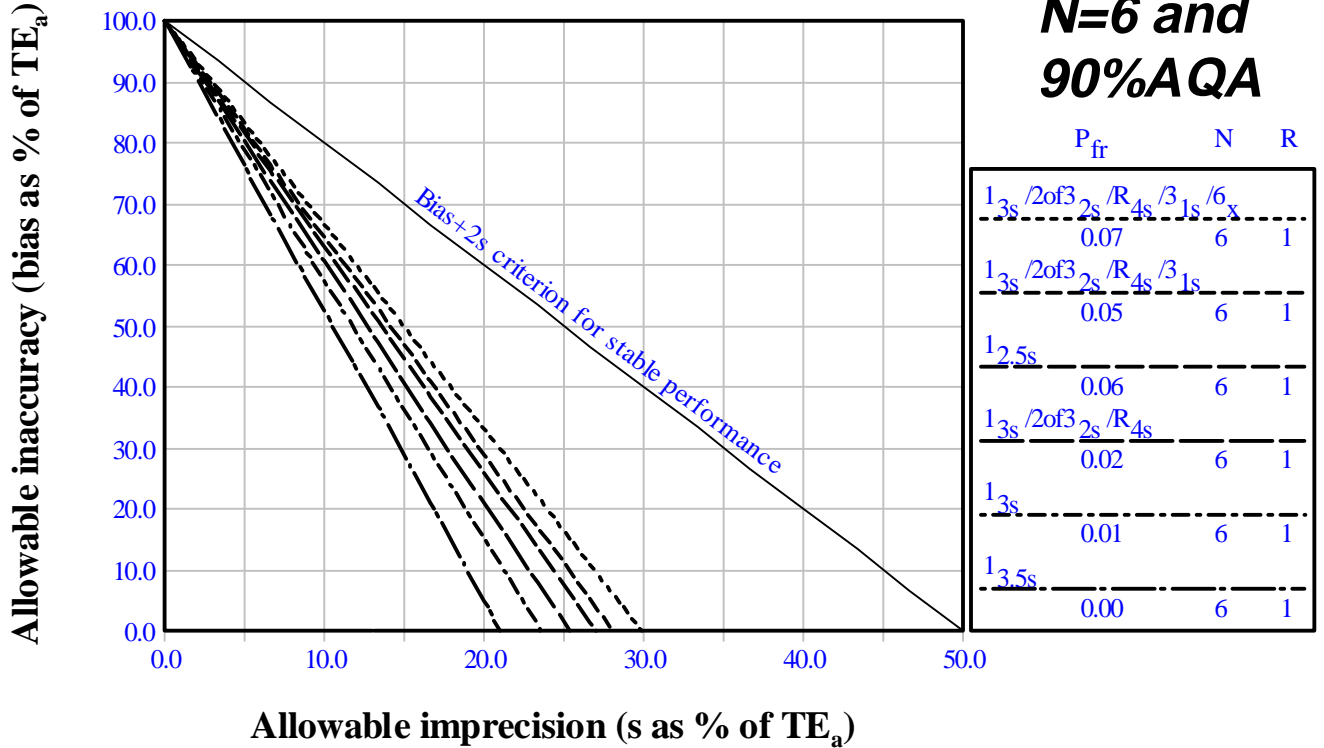


Normalized OPSecs Chart TE_a 100.0% with 50% AQA(SE)



Next, try these charts - top then bottom

Normalized OPSecs Chart TE_a 100.0% with 90% AQA(SE)



Normalized OPSecs Chart TE_a 100.0% with 50% AQA(SE)

